

**Fig No. VF-27**

1/2" ~ 6" DN15 ~ DN150



**Feature :**

Investment Casting Component  
ISO 5211 mounting Flange  
Blow-out-proof stem, Anti-Static Design  
For General Chemical and Industrial application  
Carbon steel or Super Alloy upon request

**Standard Compliance:**

Body wall thickness : EN 12516-1/2  
Face to Face : EN 3202 F4/F5  
Flange dimension : DIN 2501 PN40  
Body Material : EN 1503-1  
Pressure testing : EN 12266-1

**Specifications :**

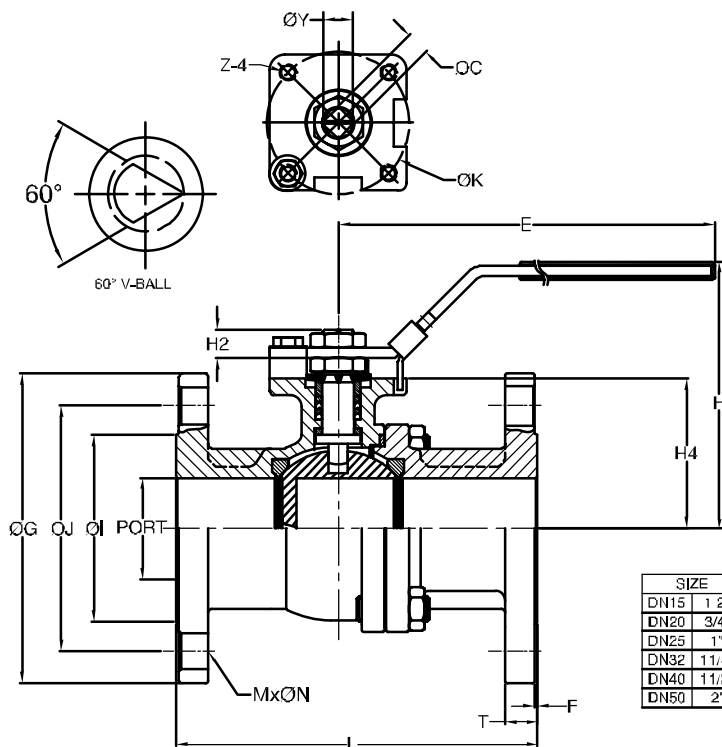
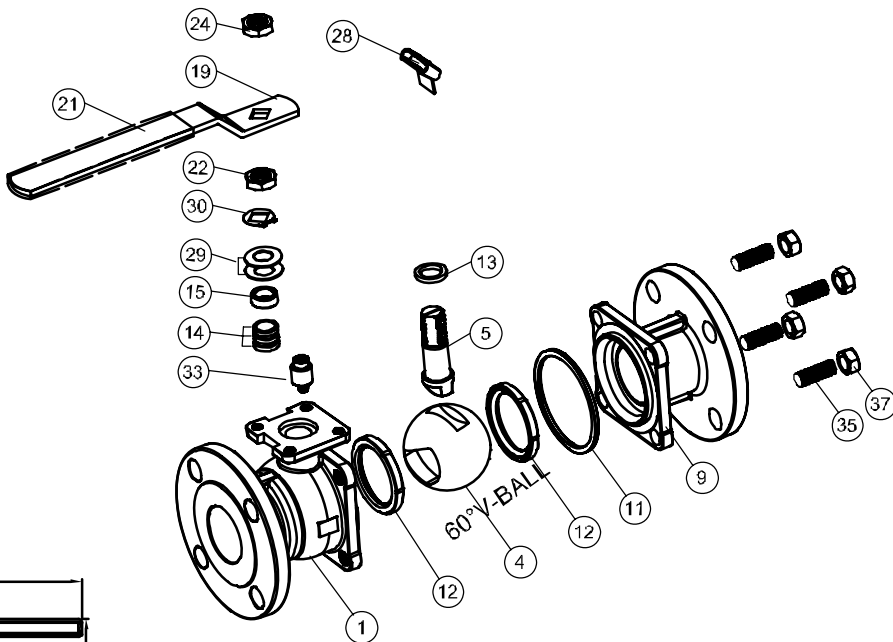
End connection : Flange RF  
Working pressure : 38.8 Bar ( CWP)  
Temperature : -20 ~180°C

**Option :**

Fire safe design

**MATERIALS LIST**

NO.	PART NAME	MATERIAL
1	BODY	1.4408/EN1503-1
4	BALL	CF8M/EN1503-2
5	STEM	SS316
9	END CAP	1.4408/EN1503-1
11	BODY SEAL	PTFE.
12	SEAT	50%SS+50%PTFE.
13	THRUST WASHER	PTFE.
14	STEM PACKING	PTFE.
15	GLAND	SS.304
15-1	GLAND BUSH	SS304
19	HANDLE	LRON
20	SET BOLT	SS304
21	HANDLE COVER	PLASTIC
28	STOP PLATE	SS304
35	BODY BOLT	ASTM A193 Gr.B8
37	BOLT NUT	ASTM A194 Gr.8
41	SNAP RING	SS304
42	GLAND BOLT	SS304
50	HANDLE ADAPTER	SS.304



**DIMENSIONS**

ØRE, 1/2"																		
SIZE	PORT	L	E	H	H2	H4	C	ØY	ØG	ØJ	ØI	T	F	M	ØN	ØK	Z	
DN15	1 2"	15.0	115.0	132.0	80.0	8.5	38.5	9.0	11.2	95.0	65.0	45.0	16.0	2.0	4	14.0	42.0	M5*0.8P
DN20	3/4"	20.0	120.0	132.0	84.5	8.5	42.5	9.0	11.2	105.0	75.0	58.0	18.0	2.0	4	14.0	42.0	M5*0.8P
DN25	1"	25.0	125.0	166.0	102.0	12.0	52.0	11.0	14.3	115.0	85.0	68.0	18.0	2.0	4	14.0	50.0	M6*1.0P
DN32	1 1/4"	32.0	130.0	166.0	105.0	12.0	56.0	11.0	14.3	140.0	100.0	78.0	18.0	2.0	4	18.0	50.0	M6*1.0P
DN40	1 1/2"	38.0	140.0	198.0	125.0	12.0	85.3	14.0	18.0	150.0	110.0	88.0	18.0	2.0	4	18.0	70.0	M8*1.25P
DN50	2"	50.0	160.0	198.0	132.0	12.0	73.8	14.0	18.0	165.0	125.0	102.0	20.0	2.0	4	18.0	70.0	M8*1.25P

unit:mm

**Fig No. VF-27**

1/2" ~ 6" DN15 ~ DN150



**Feature :**

Investment Casting Component  
ISO 5211 mounting Flange  
Blow-out-proof stem, Anti-Static Design  
For General Chemical and Industrial application  
Carbon steel or Super Alloy upon request

**Standard Compliance:**

Body wall thickness : EN 12516-1/2  
Face to Face : EN 3202 F4/F5  
Flange dimension : DIN 2501 PN40  
Body Material : EN 1503-1  
Pressure testing : EN 12266-1

**Specifications :**

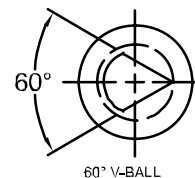
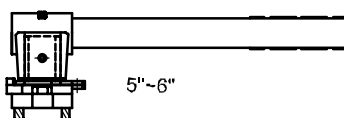
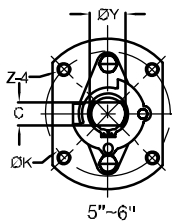
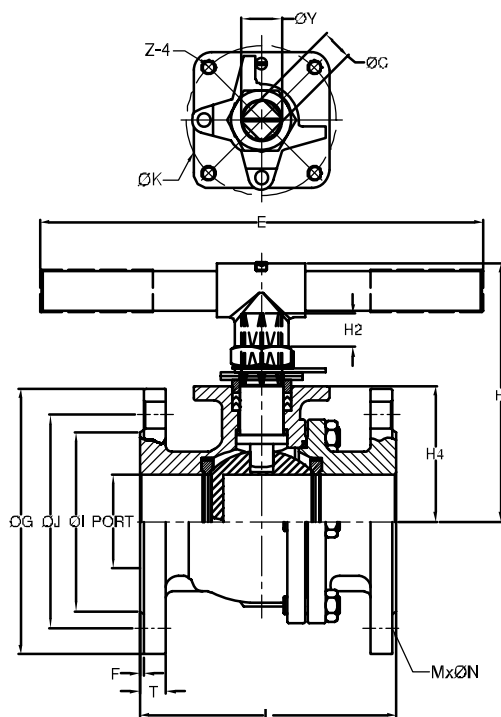
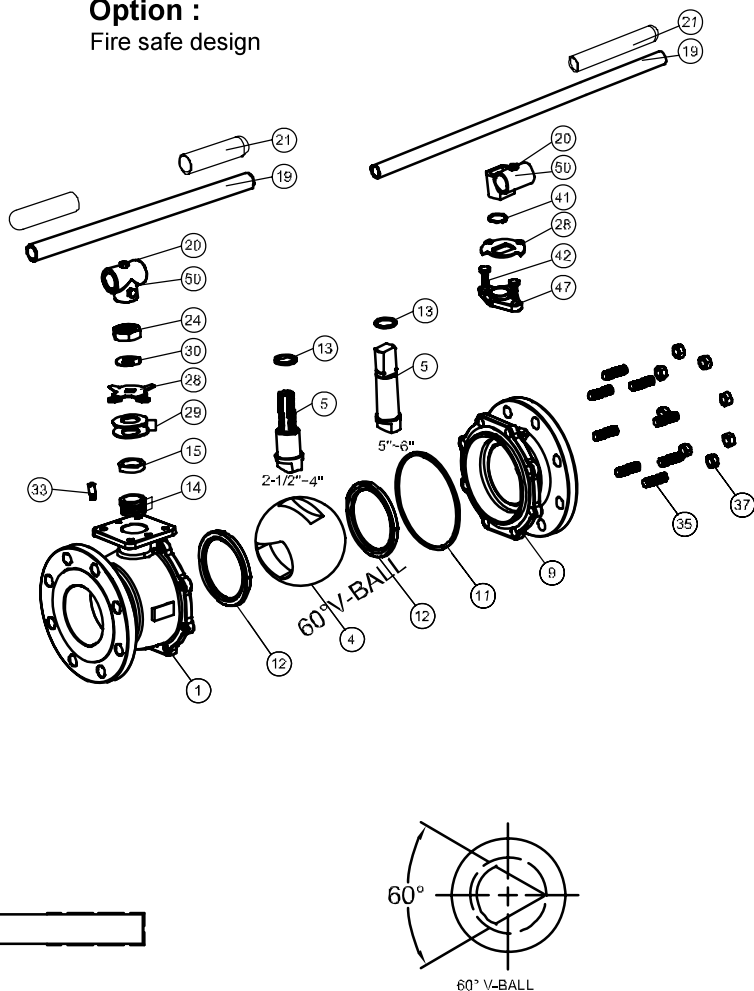
End connection : Flange RF  
Working pressure : 38.8 Bar ( CWP)  
Temperature : -20 ~180°C

**Option :**

Fire safe design

**MATERIALS LIST**

NO.	PART NAME	MATERIAL
1	BODY	1.4408/EN1503-1
4	BALL	CF8M/EN1503-2
5	STEM	SS316
9	END CAP	1.4408/EN1503-1
11	BODY SEAL	PTFE.
12	SEAT	50%SS+50%PTFE.
13	THRUST WASHER	PTFE.
14	STEM PACKING	PTFE.
15	GLAND BUSH	SS304
19	HANDLE	LRON
20	SET BOLT	SS304
21	HANDLE COVER	PLASTIC
24	HANDLE NUT	SS304
28	STOP PLATE	SS304
29	BELLEVILLE WASHER	SS301
30	TAB WASHER	SS304
33	STOP PIN	SS304
35	BODY BOLT	ASTM A193 Gr.B8
37	BOLT NUT	ASTM A194 Gr.8
41	SNAP RING	SS304
42	GLAND BOLT	SS304
47	GLAND FLANGE	SS304
50	HANDLE ADAPTER	ASTM A351 Gr.CF8



**DIMENSIONS**

SIZE	PORT	L	E	H	H1	H2	H4	C	ØY	ØG	ØJ	ØI	T	F	M	ØN	ØK	Z	
DN65	2 1/2"	64.0	170.0	300.0	178.0	—	23.0	92.5	17.0	22.3	185.0	145.0	122.0	22.0	2.0	8	18.0	102.0	M10*1.5P
DN80	3"	76.0	180.0	300.0	188.0	—	23.0	101.7	17.0	22.3	200.0	160.0	138.0	24.0	2.0	8	18.0	102.0	M10*1.5P
DN100	4"	100.0	190.0	450.0	202.0	—	23.0	119.0	17.0	22.3	235.0	190.0	158.0	24.0	2.0	8	22.0	102.0	M10*1.5P
DN125	5"	125.0	325.0	600.0	—	233.0	45.0	163.0	23.0	36.0	270.0	220.0	188.0	26.0	2.0	8	26.0	125.0	M12*1.75P
DN150	6"	150.0	350.0	800.0	—	259.0	45.0	182.5	23.0	36.0	300.0	250.0	218.0	28.0	2.0	8	26.0	125.0	M12*1.75P

unit:mm