

**Fig No. V-166**      **Full Bore**  
**1/4" ~ 2" DN8 ~ 50**



## Features :

Two Piece body design, Length according to DIN 3202 M3  
Investment cast Component, Blow-out-proof Stem  
For Industrial, chemical application  
Carbon Steel & Super Alloy upon request

## Standard Compliance :

Body wall thickness : EN 12516-1/3  
Threaded end : BS 21 ( BSP )

BSPT

ISO 228-1

DIN 2999

ISO7-1Rp

Face to Face : MD's Standard

Body Material : EN 1503-1

Pressure Testing : EN12266

## Specification

End Connection : Threaded end

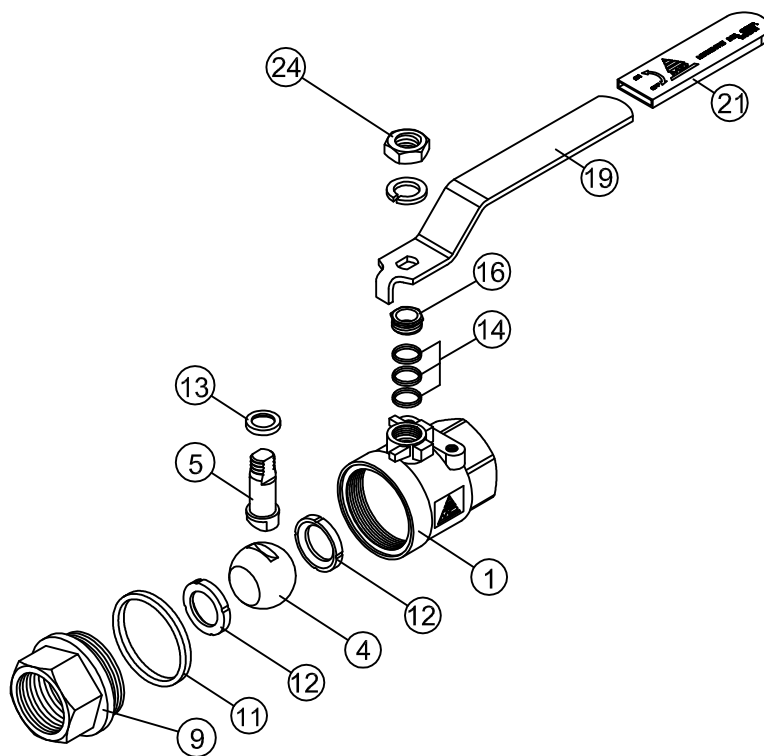
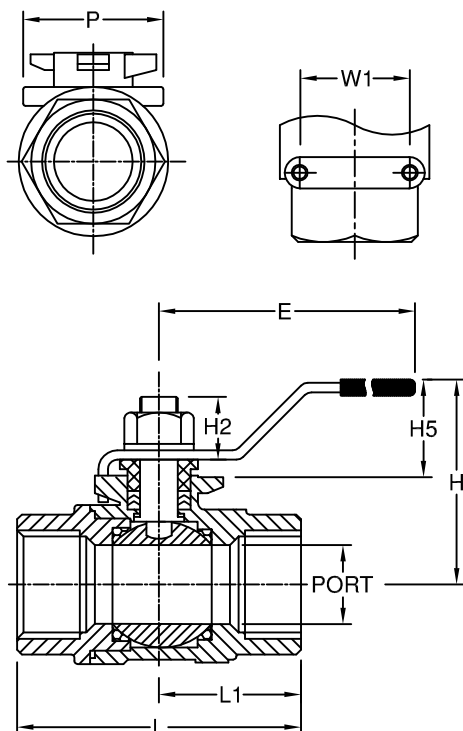
Working Pressure : 140 Bar ( CWP ) for DN8-25

125 Bar ( CWP ) for DN32-50

Temperature : -20 ~ 180<sup>0</sup> C

## MATERIALS LIST

NO.	PART NAME	MATERIAL
1	BODY	1.4408/EN1503-1
4	BALL	ASTM A351 Gr.CF8M
5	STEM	SS316
9	END CAP	1.4408/EN1503-1
11	BODY SEAL	PTFE.
12	SEAT	PTFE.
13	THRUST WASHER	PTFE.
14	STEM PACKING	PTFE.
16	GLAND NUT	SS304
19	HANDLE	SS304
21	HANDLE COVER	PLASTIC
24	HANDLE NUT	SS304



## DIMENSIONS

unit:mm

SIZE	PORT	L	L1	E	H	H2	H5	P	W1
DN8	1/4"	11.5	60.0	28.2	97.4	50.0	9.5	35.5	28.5
DN10	3/8"	12.5	60.0	28.2	97.4	50.0	9.5	35.5	28.5
DN15	1/2"	15.0	75.0	35.7	123.0	58.8	12.4	42.3	28.5
DN20	3/4"	20.0	80.0	40.2	123.0	62.5	12.2	42.5	35.0
DN25	1"	25.0	90.0	45.0	145.0	69.3	17.7	45.8	35.0
DN32	1-1/4"	32.0	110.0	53.4	145.0	76.0	17.3	46.2	38.0
DN40	1-1/2"	38.0	120.0	60.0	189.0	87.0	20.1	51.7	38.0
DN50	2"	50.0	140.0	69.5	189.0	95.0	20.0	52.7	38.0