

Fig no. V-155T Full Bore
1/4" ~ 2-1/2" DN 8- DN 65



Features :

- Investment Casting Component
- Blow out proof stem, Anti-static Device,
- In-line Maintenance
- For Chemical, Industrial Application
- Carbon Steel or Super Alloy upon request

Standard Compliance :

- Body wall thickness : EN 12516-1/2/3
- Threaded end : BS 21 (BSP)
- BSPT
- ISO 228-1G
- DIN 2999
- ISO 7-1Rp
- Face to Face : MD's standard
- Body material : EN1503-1
- Pressure testing : EN 12266

Specification :

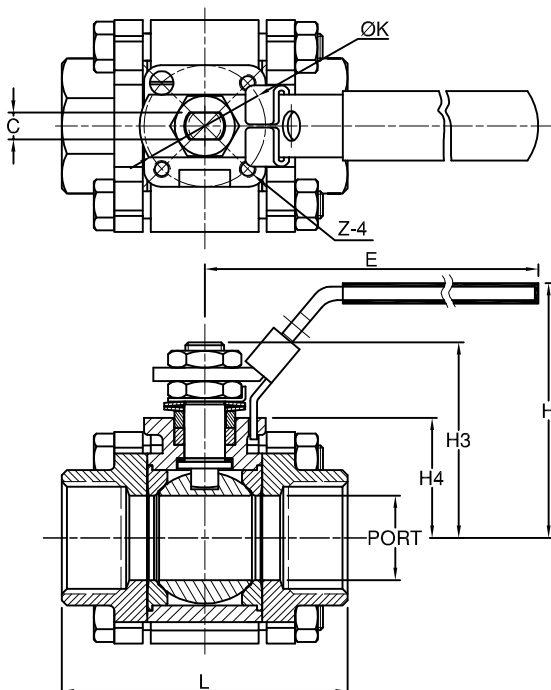
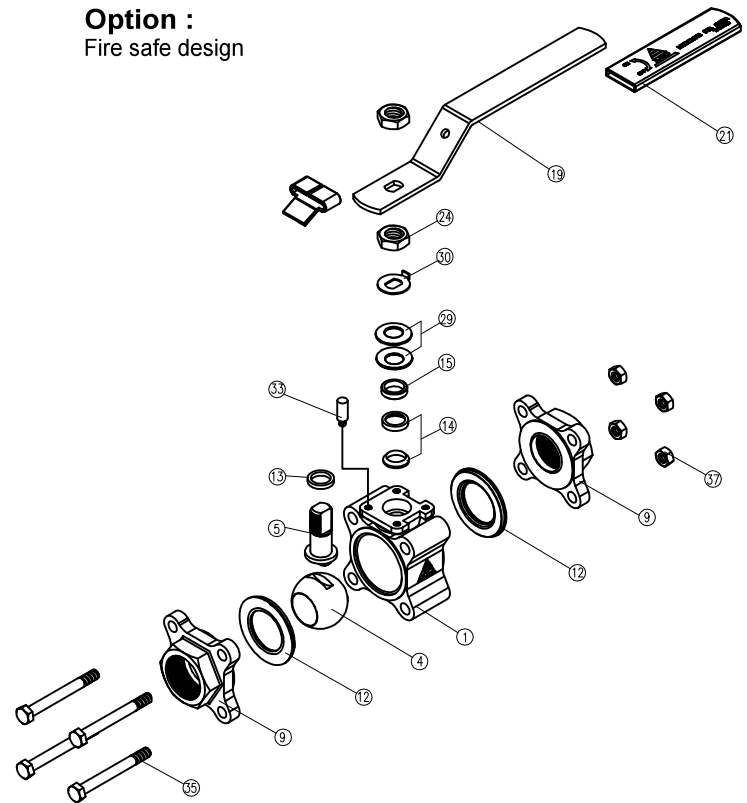
- End connection : Threaded end
- Working Pressure : 140 Bar (CWP) for DN8- 25
- 100 Bar (CWP) for DN32- 50
- 63 Bar (CWP) for DN65
- Temperature : -20 to 180°C

Option :

- Fire safe design

MATERIAL LIST

| NO. | PART NAME | MATERIAL |
|-----|-------------------|-------------------|
| 1 | BODY | 1.4408/EN1503-1 |
| 4 | BALL | ASTM A351 Gr.CF8M |
| 5 | STEM | SS316 |
| 9 | END CAP | 1.4408/EN1503-1 |
| 12 | SEAT | PTFE. |
| 13 | THRUST WASHER | PTFE. |
| 14 | STEM PACKING | PTFE. |
| 15 | GLAND | SS304 |
| 19 | HANDLE | SS304 |
| 21 | HANDLE COVER | PLASTIC |
| 24 | HANDLE NUT | SS304 |
| 29 | BELLEVILLE WASHER | SS301 |
| 30 | TAB WASHER | SS304 |
| 33 | STOP PIN | SS304 |
| 35 | BODY BLOT | SS304 |
| 37 | BLOT NUT | SS304 |



DIMENSION

| SIZE | PORT | L | E | H | H3 | H4 | C | ØK | Z-4 |
|------|--------|------|-------|-------|-------|------|------|------|--------------|
| DN8 | 1/4" | 11.5 | 57.5 | 102.0 | 64.0 | 46.9 | 31.6 | 5.0 | 36.0 M5xP0.8 |
| DN10 | 3/8" | 12.5 | 57.5 | 102.0 | 64.0 | 46.9 | 31.6 | 5.0 | 36.0 M5xP0.8 |
| DN15 | 1/2" | 15.0 | 69.4 | 102.0 | 64.0 | 46.9 | 31.6 | 5.0 | 36.0 M5xP0.8 |
| DN20 | 3/4" | 20.0 | 77.5 | 102.0 | 67.0 | 50.2 | 33.8 | 5.0 | 36.0 M5xP0.8 |
| DN25 | 1" | 25.0 | 86.0 | 145.0 | 76.0 | 56.0 | 35.5 | 8.0 | 42.0 M5xP0.8 |
| DN32 | 1-1/4" | 32.0 | 99.5 | 145.0 | 80.0 | 61.3 | 40.3 | 8.0 | 42.0 M5xP0.8 |
| DN40 | 1-1/2" | 38.0 | 112.6 | 162.0 | 92.0 | 75.0 | 46.5 | 10.0 | 50.0 M6xP1.0 |
| DN50 | 2" | 50.0 | 128.6 | 162.0 | 101.0 | 83.0 | 55.5 | 10.0 | 50.0 M6xP1.0 |

Fig no. V-155T Full Bore
1/4" ~ 2-1/2" DN 8 - DN 65



Features :

- Investment Casting Component
- Blow out proof stem, Anti-static Device,
- In-line Maintenance
- For Chemical, Industrial Application
- Carbon Steel or Super Alloy upon request

Standard Compliance :

- Body wall thickness : EN 12516-1/2/3
- Threaded end : BS 21 (BSP)
- BSPT
- ISO 228-1G
- DIN 2999
- ISO 7-1Rp
- Face to Face : MD's standard
- Body material : EN1503-1
- Pressure testing : EN 12266

Specification :

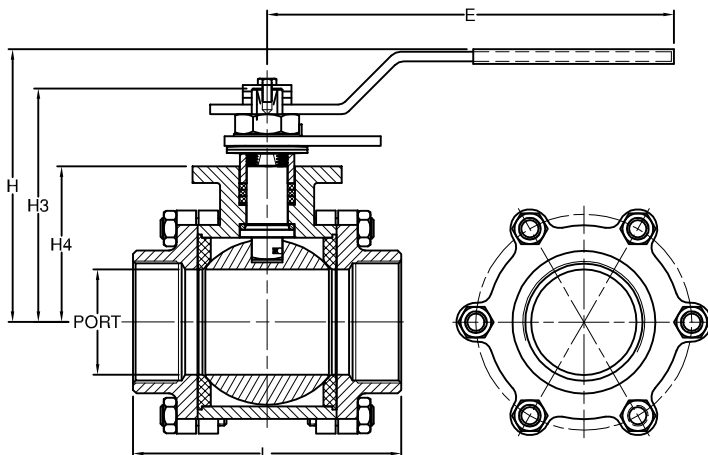
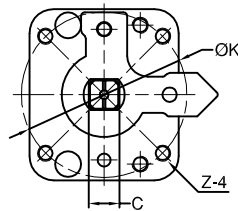
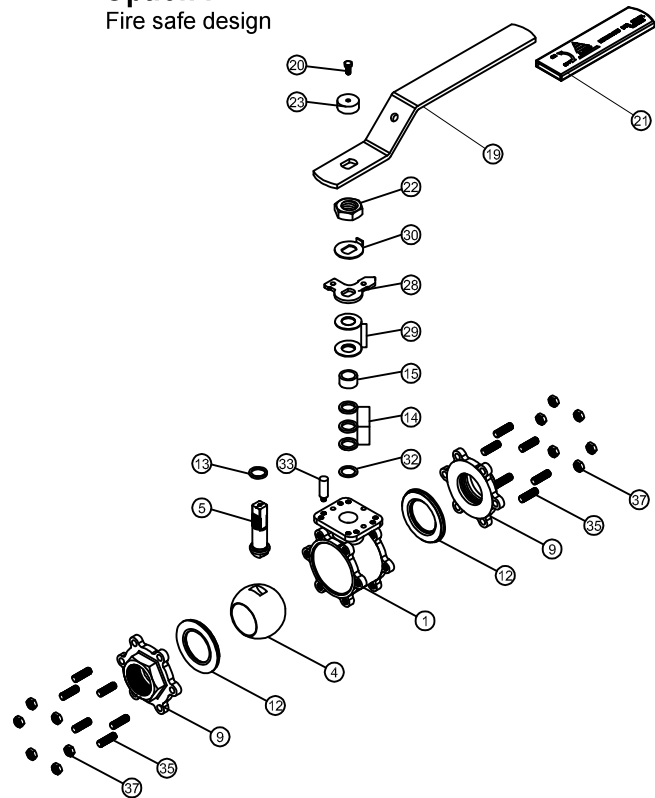
- End connection : Threaded end
- Working temperature : 140 Bar (CWP) for DN8- 25
- 100 Bar (CWP) for DN32- 50
- 63 Bar (CWP) for DN65
- Temperature : -20 to 180° C

Option :

- Fire safe design

MATERIAL LIST

| NO. | PART NAME | MATERIAL |
|-----|-------------------|-------------------|
| 1 | BODY | 1.4408/EN1503-1 |
| 4 | BALL | ASTM A351 Gr.CF8M |
| 5 | STEM | SS316 |
| 9 | END CAP | 1.4408/EN1503-1 |
| 12 | SEAT | PTFE. |
| 13 | THRUST WASHER | PTFE. |
| 14 | STEM PACKING | NRG |
| 15 | GLAND BUSH | SS304 |
| 19 | HANDLE | SS304 |
| 20 | STE SCREW | SS304 |
| 21 | HANDLE COVER | PLASTIC |
| 22 | STEM NUT | SS304 |
| 23 | HANDLE WASHER | SS304 |
| 28 | STOP PLATE | SS304 |
| 29 | BELLEVILLE WASHER | SS304-CSP |
| 30 | TAB WASHER | SS304 |
| 32 | PACKING FOLLOWER | SS304 |
| 35 | BODY BLOT | SS304 |
| 37 | BLOT NUT | SS304 |



DIMENSION

unit:mm

| SIZE | PORT | L | E | H | H3 | H4 | C | ØK | Z-4 |
|------|--------|------|-------|-------|-------|-------|------|------|----------------|
| DN65 | 2-1/2" | 65.0 | 180.0 | 265.0 | 168.0 | 144.0 | 96.0 | 18.9 | 102.0 M10xP1.5 |