

Fig no. V-155S Full Bore
1/4" ~ 2-1/2" DN 8- DN 65



Features :

- Investment Casting Component
- Blow out proof stem, Anti-static Device,
- In-line Maintenance
- For Chemical, Industrial Application
- Carbon Steel or Super Alloy upon request

Standard Compliance :

- Body wall thickness : EN 12516-1/2/3
- Socket Weld : B16.11
- Face to Face : MD's standard
- Body material : EN1503-1
- Pressure testing : EN 12266

Specification :

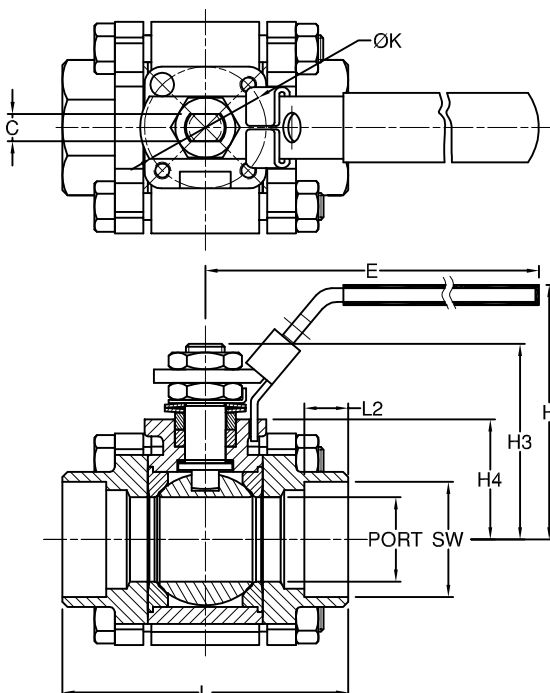
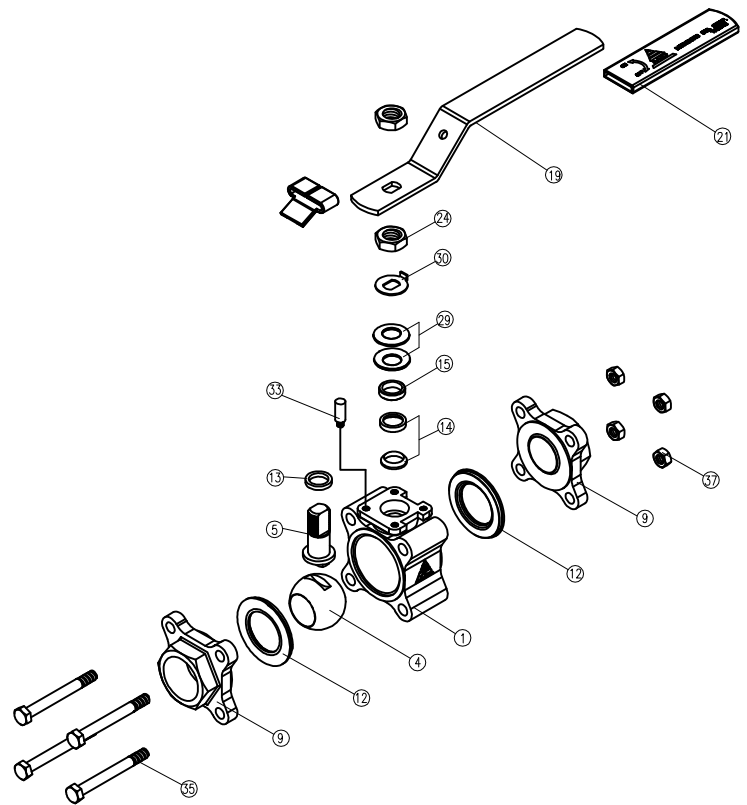
- End connection : Socket weld end
- Working Pressure : 140bar (CWP) for DN8 - 25
- 100 bar (CWP) for DN32- DN50
- 63 bar (CWP) for DN65
- Temperature : -20 to 180°C

Option :

- Fire safe design

MATERIAL LIST

NO.	PART NAME	MATERIAL
1	BODY	1.4408/EN1503-1
4	BALL	ASTM A351 Gr.CF8M
5	STEM	SS316
9	END CAP	1.4408/EN1503-1
12	SEAT	PTFE.
13	THRUST WASHER	PTFE.
14	STEM PACKING	PTFE.
15	GLAND	SS304
19	HANDLE	SS304
21	HANDLE COVER	PLASTIC
24	HANDLE NUT	SS304
29	BELLEVILLE WASHER	SS301
30	TAB WASHER	SS304
33	STOP PIN	SS304
35	BODY BLOT	SS304
37	BLOT NUT	SS304



DIMENSION

SIZE	PORT	L	L2	E	H	H3	H4	C	ØK	Z-4	SW	
DN8	1/4"	11.5	57.5	10.0	102.0	64.0	46.9	31.6	5.0	36.0	M5xP0.8	14.2
DN10	3/8"	12.5	57.5	10.0	102.0	64.0	46.9	31.6	5.0	36.0	M5xP0.8	17.5
DN15	1/2"	15.0	69.4	10.0	102.0	64.0	46.9	31.6	5.0	36.0	M5xP0.8	21.8
DN20	3/4"	20.0	77.5	13.0	102.0	67.0	50.2	33.8	5.0	36.0	M5xP0.8	27.4
DN25	1"	25.0	86.0	13.0	145.0	76.0	56.0	35.5	8.0	42.0	M5xP0.8	34.1
DN32	1-1/4"	32.0	99.5	13.0	145.0	80.0	61.3	40.3	8.0	42.0	M5xP0.8	42.7
DN40	1-1/2"	38.0	112.6	13.0	162.0	92.0	75.0	46.5	10.0	50.0	M6xP1.0	49.0
DN50	2"	50.0	128.6	16.0	162.0	101.0	83.0	55.5	10.0	50.0	M6xP1.0	61.0

Fig no. V-155S Full Bore
1/4" ~2-1/2" DN 8 ~ DN65



Features :

Investment Casting Component
 Blow out proof stem, Anti-static Device,
 In-line Maintenance
 For Chemical, Industrial Application
 Carbon Steel or Super Alloy upon request

Standard Compliance :

Body wall thickness : EN 12516-1/2/3
 Socket Weld : B16.11
 Face to Face : MD's standard
 Body material : EN1503-1
 Pressure testing : EN 12266

Specification :

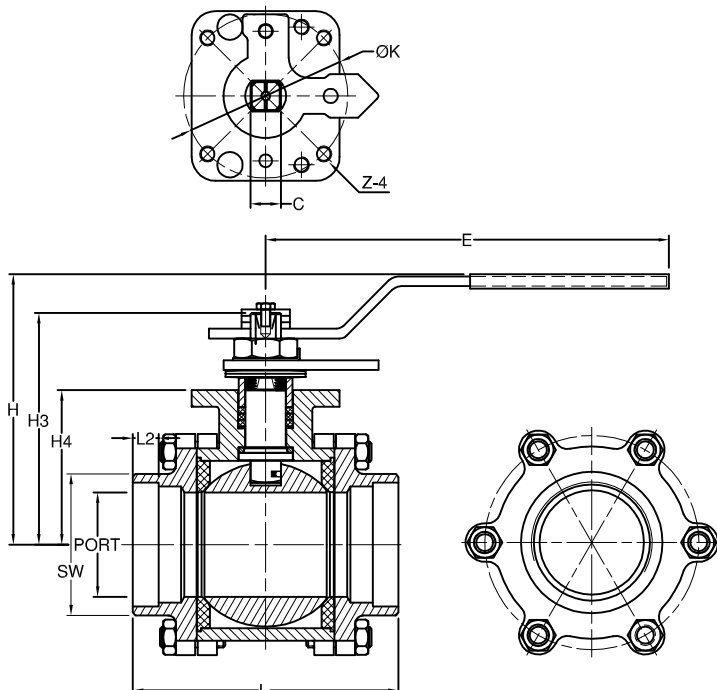
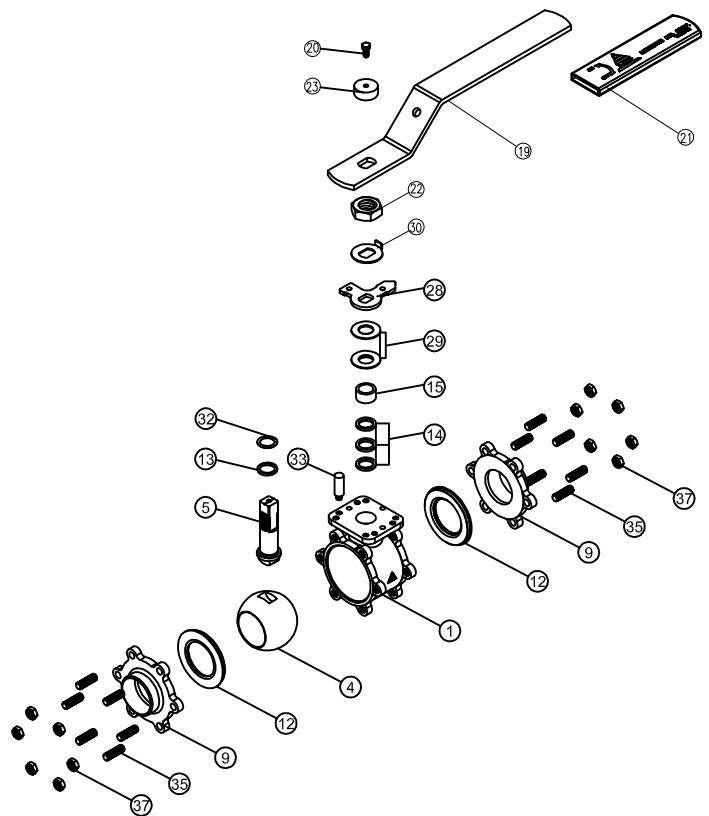
End connection : Socket weld end
 Working Pressure : 140bar (CWP) for DN8-25
 100 bar (CWP) for DN32- DN50
 63 bar (CWP) for DN65
 Temperature : -20 to 180°C

Option :

Fire safe design

MATERIAL LIST

NO.	PART NAME	MATERIAL
1	BODY	1.4408/EN1503-1
4	BALL	ASTM A351 Gr.CF8M
5	STEM	SS316
9	END CAP	1.4408/EN1503-1
12	SEAT	PTFE.
13	THRUST WASHER	PTFE.
14	STEM PACKING	NRG
15	GLAND BUSH	SS304
19	HANDLE	SS304
20	STE SCREW	SS304
21	HANDLE COVER	PLASTIC
22	STEM NUT	SS304
23	HANDLE WASHER	SS304
28	STOP PLATE	SS304
29	BELLEVILLE WASHER	SS304-CSP
30	TAB WASHER	SS304
32	PACKING FOLLOWER	SS304
35	BODY BLOT	SS304
37	BLOT NUT	SS304



DIMENSION

unit:mm

SIZE	PORT	L	L2	E	H	H3	H4	C	ØK	Z-4	SW	
DN65	2-1/2"	65.0	180.0	16.0	265.0	168.0	144.0	96.0	18.9	102.0	M10xP1.5	77.0