

**Fig no. V-155AT Reduced Bore**  
**1/2" ~2-1/2" DN15 ~ DN65**



**Features :**

Investment Casting Component  
 Blow out proof stem, Anti-static Device,  
 In-line Maintenance  
 For Chemical, Industrial Application  
 Carbon Steel or Super Alloy upon request

**Standard Compliance :**

Body wall thickness : EN 12516-1/2/3  
 Threaded end : BS 21 (BSP)  
 BSPT  
 ISO 228-1G  
 DIN 2999  
 ISO 7-1Rp  
 Face to Face : MD's standard  
 Body material : EN1503-1  
 Pressure testing : EN 12266

**Specification :**

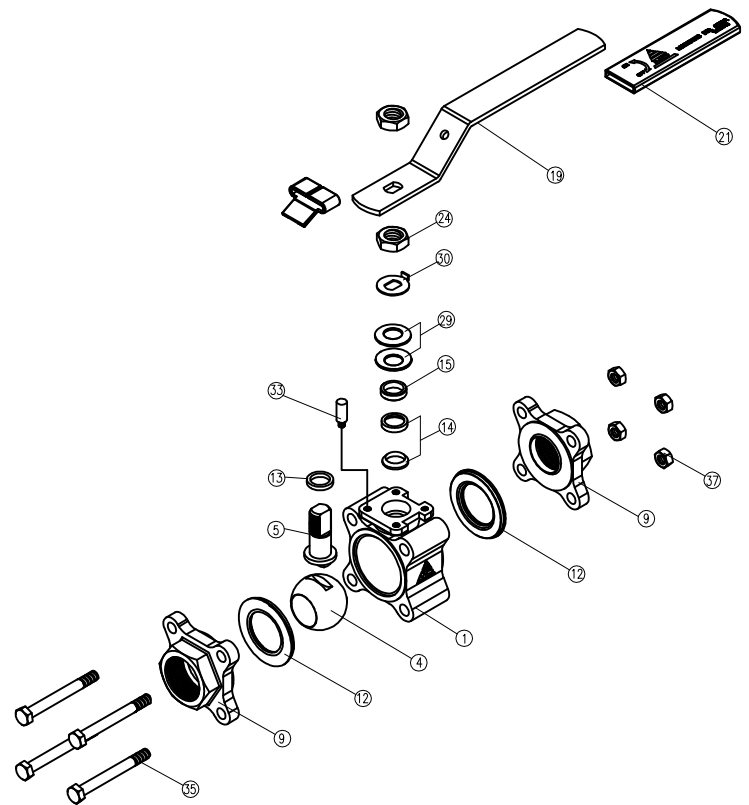
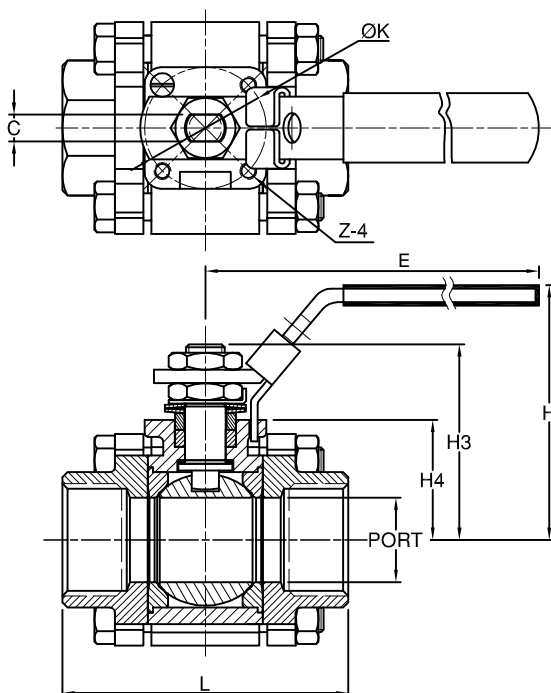
End Connection : Threaded End  
 Working pressure : 140 Bar ( CWP ) for DN15-32  
 100 Bar ( CWP ) for DN40- 65  
 Temperature : -20 to 180° C

**Option :**

Fire safe design

**MATERIAL LIST**

NO.	PART NAME	MATERIAL
1	BODY	1.4408/EN1503-1
4	BALL	ASTM A351 Gr.CF8M
5	STEM	SS316
9	END CAP	1.4408/EN1503-1
12	SEAT	PTFE.
13	THRUST WASHER	PTFE.
14	STEM PACKING	PTFE.
15	GLAND	SS304
19	HANDLE	SS304
21	HANDLE COVER	PLASTIC
24	HANDLE NUT	SS304
29	BELLEVILLE WASHER	SS301
30	TAB WASHER	SS304
33	STOP PIN	SS304
35	BODY BLOT	SS304
37	BLOT NUT	SS304



**DIMENSION**

unit:mm

SIZE	PORT	L	E	H	H3	H4	C	ØK	Z-4	
DN15	1/2"	12.5	57.5	102.0	64.0	46.9	31.6	5.0	36.0	M5xP0.8
DN20	3/4"	15.0	69.4	102.0	64.0	46.9	31.6	5.0	36.0	M5xP0.8
DN25	1"	20.0	77.5	102.0	67.0	50.2	33.8	5.0	36.0	M5xP0.8
DN32	1-1/4"	25.0	86.0	145.0	76.0	56.0	35.5	8.0	42.0	M5xP0.8
DN40	1-1/2"	32.0	99.5	145.0	80.0	61.3	40.3	8.0	42.0	M5xP0.8
DN50	2"	38.0	112.6	162.0	92.0	75.0	46.5	10.0	50.0	M6xP1.0
DN65	2-1/2"	50.0	128.6	162.0	101.0	83.0	55.5	10.0	50.0	M6xP1.0