

Fig no. V-155AS Reduced Bore
1/2" ~ 2-1/2" DN 15- DN 65



Features :

Investment Casting Component
 Blow out proof stem, Anti-static Device,
 In-line Maintenance
 For Chemical, Industrial Application
 Carbon Steel or Super Alloy upon request

Standard Compliance :

Body wall thickness : EN 12516-1/2/3
 Socket Weld : B16.11
 Face to Face : MD's standard
 Body material : EN1503-1
 Pressure testing : EN 12266

Specification :

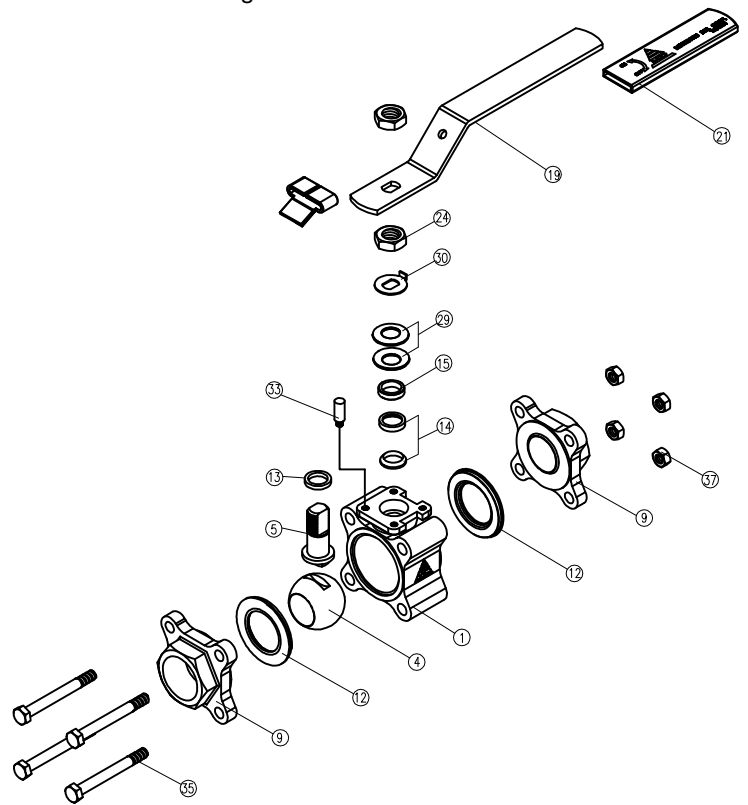
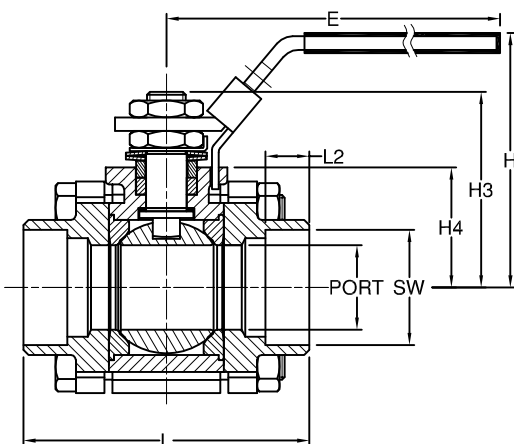
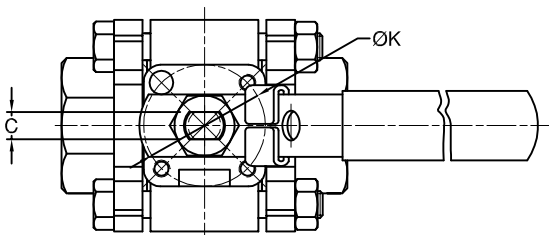
End connection : Socket weld end
 Working Pressure :140bar (CWP) for DN15-32
 100 bar (CWP) for DN40- 65
 Temperature : -20 to 180°C

Option :

Fire safe design

MATERIAL LIST

NO.	PART NAME	MATERIAL
1	BODY	1.4408/EN1503-1
4	BALL	ASTM A351 Gr.CF8M
5	STEM	SS316
9	END CAP	1.4408/EN1503-1
12	SEAT	PTFE.
13	THRUST WASHER	PTFE.
14	STEM PACKING	PTFE.
15	GLAND	SS304
19	HANDLE	SS304
21	HANDLE COVER	PLASTIC
24	HANDLE NUT	SS304
29	BELLEVILLE WASHER	SS301
30	TAB WASHER	SS304
33	STOP PIN	SS304
35	BODY BLOT	SS304
37	BLOT NUT	SS304



DIMENSIONS

unit:mm

SIZE	PORT	L	L2	E	H	H2	H3	H4	C	ØY	ØK	Z-4	SW	
DN15	1/2"	12.5	69.4	10.0	102.0	64.0	8.0	46.9	31.6	5.0	9.53	36.0	M5xP0.8	21.8
DN20	3/4"	15.0	72.5	13.0	102.0	64.0	8.0	46.9	31.6	5.0	9.53	36.0	M5xP0.8	27.4
DN25	1"	20.0	77.5	13.0	102.0	67.0	9.0	50.2	33.8	5.0	9.53	36.0	M5xP0.8	34.1
DN32	1-1/4"	25.0	86.0	13.0	145.0	76.0	11.0	56.0	35.5	8.0	12.0	42.0	M5xP0.8	42.7
DN40	1-1/2"	32.0	99.5	13.0	145.0	80.0	12.4	61.3	40.3	8.0	12.0	42.0	M5xP0.8	49.0
DN50	2"	38.0	113.6	16.0	162.0	92.0	15.0	75.0	46.5	10.0	16.0	50.0	M6xP1.0	61.0
DN65	2-1/2"	50.0	142.1	16.0	162.0	101.0	14.5	83.0	55.5	10.0	16.0	50.0	M6xP1.0	77.0