

**Fig no. V-155AB Reduced Bore**  
**1/2" ~ 2-1/2" DN 15 ~ DN 65**



**Features :**

- Investment Casting Component
- Blow out proof stem, Anti-static Device,
- In-line Maintenance
- For Chemical, Industrial Application
- Carbon Steel or Super Alloy upon request

**Standard Compliance :**

- Body wall thickness : EN 12516-1/2/3
- Butt Weld : B16.25
- Face to Face : MD's standard
- Body material : EN1503-1
- Pressure testing : EN 12266

**Specification :**

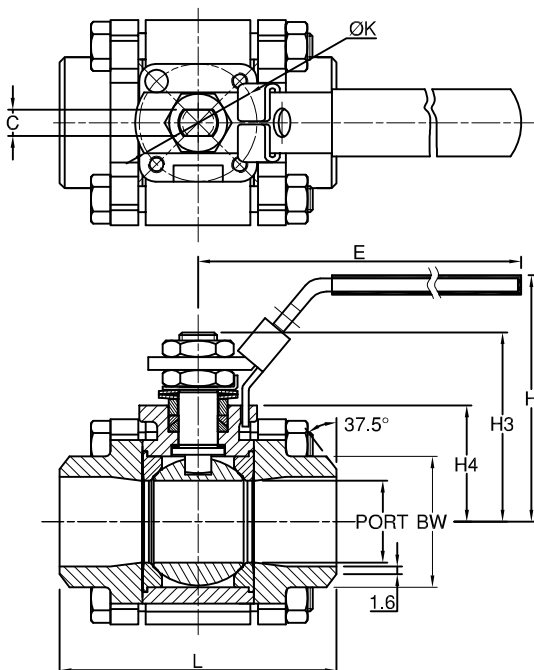
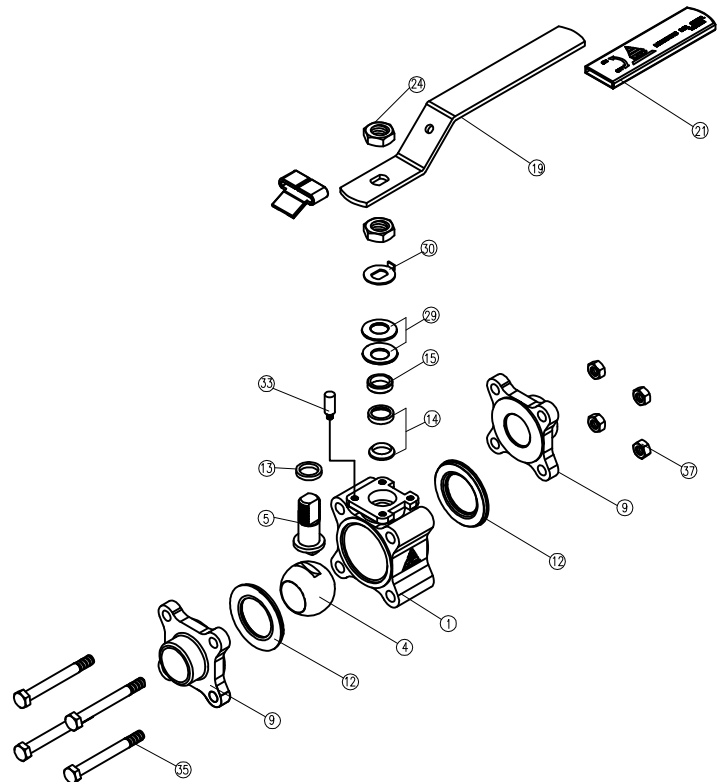
- End connection : Butt weld end
- Working Pressure : 140bar ( CWP ) for DN15-32  
 100 bar (CWP) for DN40- 65
- Temperature : -20 to 180°C

**Option :**

- Fire safe design

**MATERIAL LIST**

NO.	PART NAME	MATERIAL
1	BODY	1.4408/EN1503-1
4	BALL	ASTM A351 Gr.CF8M
5	STEM	SS316
9	END CAP	1.4408/EN1503-1
12	SEAT	PTFE.
13	THRUST WASHER	PTFE.
14	STEM PACKING	PTFE.
15	GLAND	SS304
19	HANDLE	SS304
21	HANDLE COVER	PLASTIC
24	HANDLE NUT	SS304
29	BELLEVILLE WASHER	SS301
30	TAB WASHER	SS304
33	STOP PIN	SS304
35	BODY BLOT	SS304
37	BLOT NUT	SS304



**DIMENSION**

SIZE	PORT	L	E	H	H3	H4	C	ØK	Z-4	BW	unit:mm
DN15	1/2"	12.5	67.5	102.0	64.0	46.9	31.6	5.0	36.0	M5xP0.8	21.3
DN20	3/4"	15.0	71.5	102.0	64.0	46.9	31.6	5.0	36.0	M5xP0.8	26.7
DN25	1"	20.0	78.5	102.0	67.0	50.2	33.8	5.0	36.0	M5xP0.8	33.4
DN32	1-1/4"	25.0	88.0	145.0	76.0	56.0	35.5	8.0	42.0	M5xP0.8	42.2
DN40	1-1/2"	32.0	99.5	145.0	80.0	61.3	40.3	8.0	42.0	M5xP0.8	48.3
DN50	2"	38.0	108.4	162.0	92.0	75.0	46.5	10.0	50.0	M6xP1.0	60.3
DN65	2-1/2"	50.0	130.1	162.0	101.0	83.0	55.5	10.0	50.0	M6xP1.0	73.0