

**Fig No. MD-51**     **Reduced Bore**  
**1" ~ 6"     DN25 ~ DN150**



**Feature :**

- Investment Casting Component
- ISO 5211 mounting Flange
- Blow-out-proof stem
- For General Chemical and Industrial application

**Standard Compliance:**

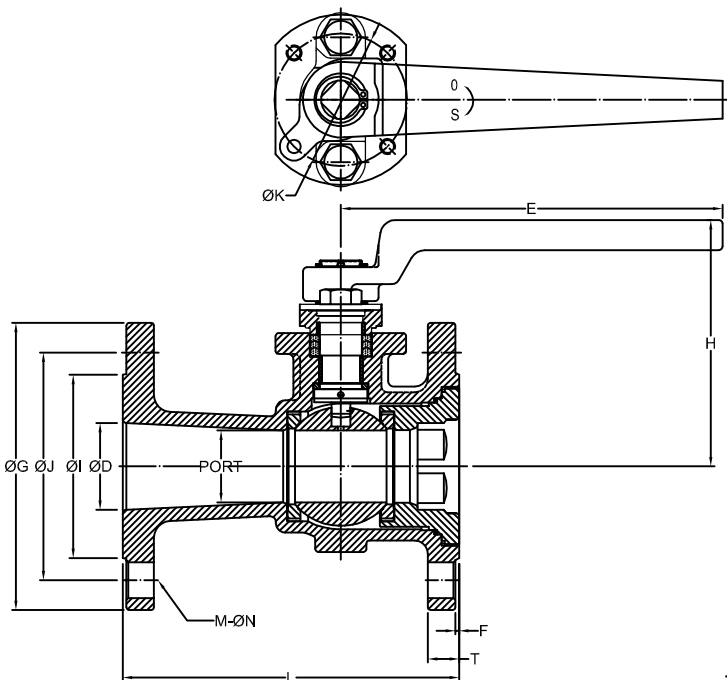
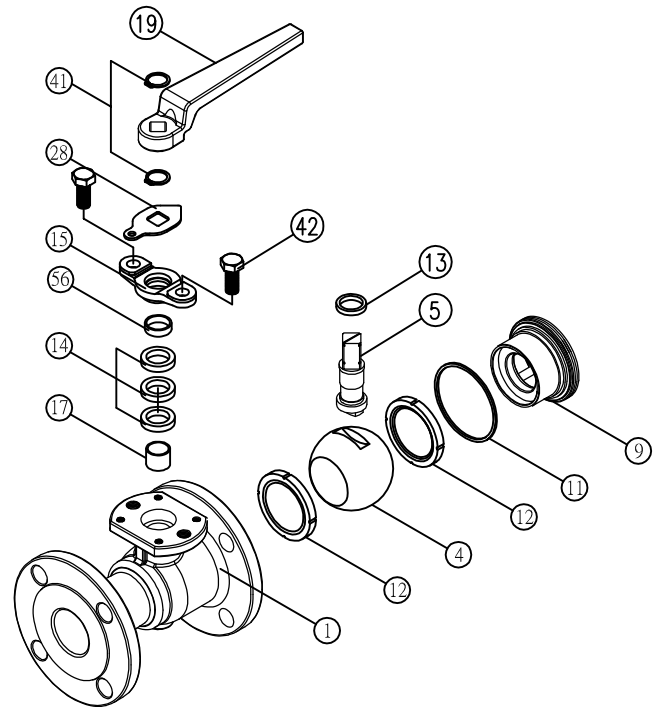
- Body wall thickness : B16.34
- Face to Face : ANSI B16.10 Class 150
- Flange Dimension : ANSI B16.5 Class 150
- Finish : 125- 250 AARH
- Body Material : ASME A494
- Pressure testing : EN12266

**Standard Compliance:**

- End connection : Flange RF
- Working pressure : 230 psi ( CWP )
- Temperature : -20 ~ 180° C

**MATERIALS LIST**

NO.	PART NAME	MATERIAL
1	BODY	ASTM A494 Gr. CW12MW
4	BALL	ASTM A494 Gr. CW12MW
5	STEM	ASTM A494 Gr. CW12MW
9	INSERT	ASTM A494 Gr. CW12MW
11	BODY SEAL	PTFE.
12	SEAT	RPTFE.
13	THRUST WASHER	PTFE.
14	STEM PACKING	PTFE.
15	GLAND	SS304
17	GLAND PACKING	SS304
19	HANDLE	FCD45
28	STOP PLATE	SS304
41	SNAP RING	SS304
42	GLAND BOLT	SS304
56	BEARING	PTFE.



**DIMENSIONS**

SIZE	PORT	L	E	H	ØG	ØJ	ØI	T	F	M	ØN	ØK	ØD	
DN25	1"	20.0	127.0	130.8	80.2	108.0	79.5	51.0	12.0	2.0	4	16.0	42.0	25.0
DN40	1-1/2"	32.5	165.0	163.0	99.0	127.0	98.5	73.0	14.8	2.0	4	16.0	50.0	38.0
DN50	2"	38.0	178.0	202.0	130.4	152.0	120.5	97.0	16.5	2.0	4	19.0	70.0	46.0
DN65	2-1/2"	50.0	190.0	202.0	137.9	178.0	139.5	105.0	18.0	2.0	4	19.0	70.0	65.0
DN80	3"	58.0	203.0	323.5	159.3	190.0	152.5	127.0	19.5	2.0	4	19.0	102.0	78.0
DN100	4"	80.0	229.0	323.5	182.3	229.0	190.5	163.0	24.3	2.0	8	19.0	102.0	95.0
DN150	6"	115.0	267.0	752.5	241.6	279.0	241.5	216.0	25.4	2.0	8	22.0	125.0	150.0

unit:mm