

Fig No. K-338TC Tube Bore
1/2" - 2" DN15-50



Features :

Investment Casting, Four Seat & Screwed Body Design
 Blow out proof stem, Direct Mounting to Actuator
 360 degree rotation design
 For Food/ Beverage, special chemicals application

Standard Compliance :

Body wall thickness : EN12516-1/3, BPE
 Face to face : MD's standard
 Clamp end : ASME/ BPE 2007
 Pressure testing : EN12266
 Body material : EN 1503-1
 Seat material : FDA UPS 23 Class VI
 Interior finish : Mechanical polishing to SF1

Specification :

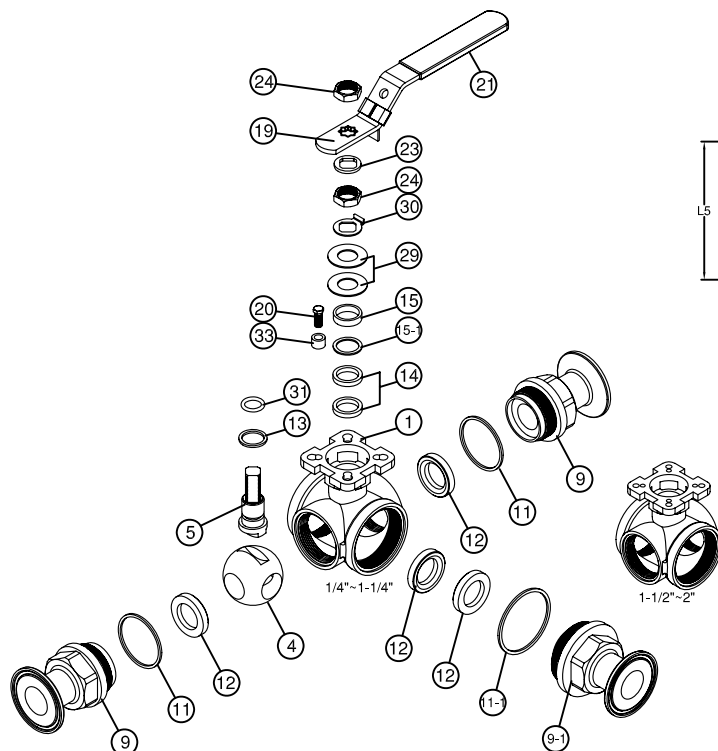
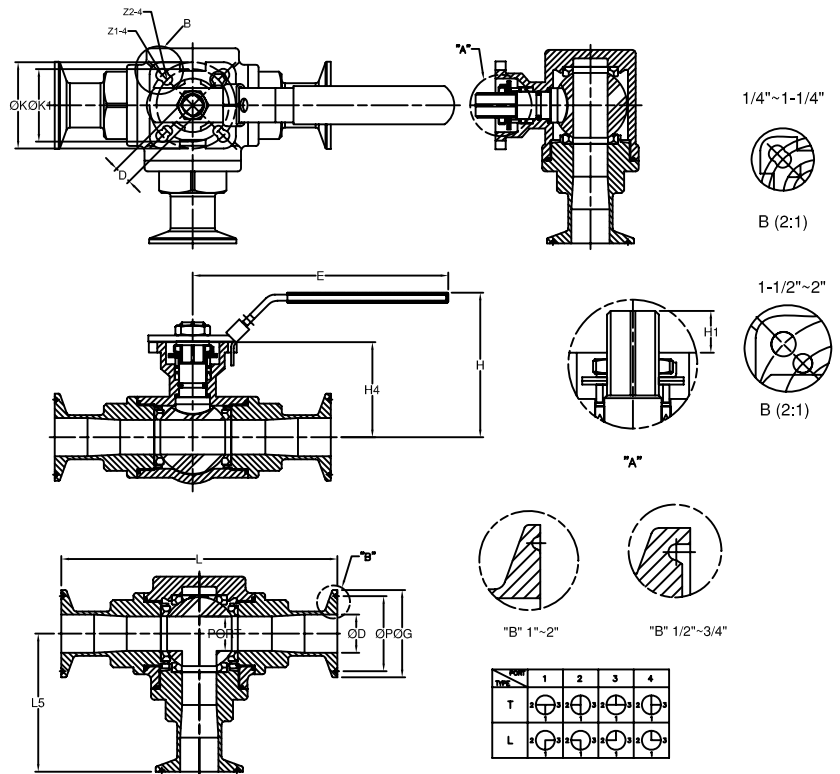
End Connection : T-Clamp end
 Working pressure : 40 bar (CWP)
 Temperature : -20 to 180°C

Options :

1. Cavity filler seat

MATERIALS LIST

NO.	PART NAME	MATERIAL
1	BODY	1.4408/EN1503-1
4	BALL	CF8M/EN1503-2
5	STEM	SS316
9	END CAP	1.4408/EN1503-1
9-1	END CAP	1.4408/EN1503-1
11	BODY SEALS	PTFE.
11-1	BODY SEALS	PTFE.
12	SEATS	PTFE.
13	THRUST WASHER	PTFE.
14	STEM PACKING	PTFE.
15	GLAND BUSH	SS304
15-1	GLAND WASHER	TFM1600
19	HANDLE	SS304
20	SCREW	SS304
21	HANDLE SLEEVE	PLASTIC
23	WASHER	SS304
24	HANDLE NUT	SS304
29	BELLEVILLE WASAER	SUS304-CSP
30	TAB WASHER	SS304
31	O-RING	VITON
33	STOP PIN	SS304



DIMENSIONS

SIZE	PORT	L	L5	E	H	H1	H4	C	ØG	Z1	Z2	ØD	ØP	units:mm	
														ØK	ØK1
DN15	1/2"	12.5	133.0	67.0	132.0	64.9	8.2	36.8	9.0	25.2	6.0	9.4	20.24	F04	F03
DN20	3/4"	12.5	142.0	71.0	132.0	64.9	8.2	36.8	9.0	25.2	6.0	15.75	20.24	F04	F03
DN25	1"	20.0	160.0	80.0	180.0	94.3	11.5	55.1	11.0	50.5	7.0	22.1	43.5	F05	F04
DN40	1-1/2"	32.0	182.0	91.0	225.0	115.7	15.1	75.2	14.0	50.5	9.0	34.8	43.5	F07	F05
DN50	2"	38.0	216.0	108.0	225.0	124.9	15.1	84.4	14.0	64.0	9.0	47.5	56.5	F07	F05