

Fig No : ITS - 100 Weather Proof



FEATURES

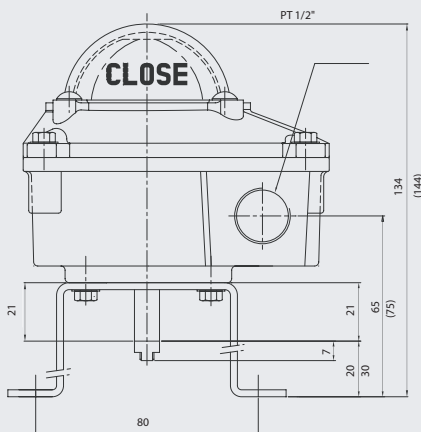
- Weather proof ITS 100 series primarily a rotary position indication device designed to integral valve and NAMUR rotary actuator with a variety of mounting options, internal switch choices and configurations.
- Rigid and Compact Body design constructed from Aluminum Alloy Die-Casting capable of operating even in arduous conditions.
- Dome Position Indicator constructed from high impact resistance polycarbonate material which offers instant visual recognition of valve position up to 50 meters.
- Easy Cam set

Technical Specification

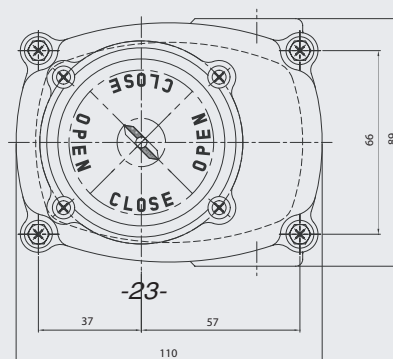
Enclosure Protection	Weather proof, IP67
Ingress Protection	IP67
Coating	Epoxy-Polyester inside and outside against corrosion, Special coating as option
Ambient Temp	-20°C~+85°C, Higher temperature on request
Cable entry	2 - 1/2"NPT, 2 - M20, 2 - 1/2"PT, 2 - 1/2"PF on request
Terminal	8 terminals strips(6 for switches, 2 for solenoid connection)
Position monitoring indicator	0°~90° Yellow-open / Red-close (Dome)
Switches	2 X SPDT Mechanical switch (form C)
Mounting bracket	VDI/VDE3845, NAMUR

DIMENSIONS

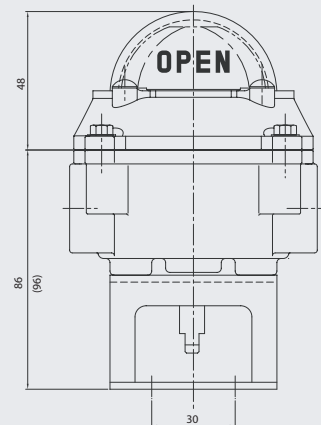
Dimension of ITS - 100 series



Front view



Top view



Side view

Fig No : ITS - 300 Explosion Proof



FEATURES

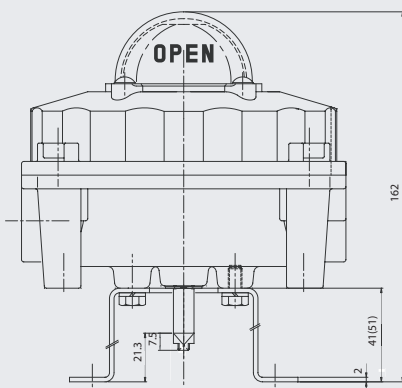
ITS 300 series are designed suitable for monitoring and controlling on/off valves in usage in hazardous area application having compact, robust design that conforms to EN50014 and EN50018 and suitable for Zone 1, 2 applications, Ingress protection to IP67.

Housing Material : Standard die-casted aluminum, optional Stainless steel, Carbone steel

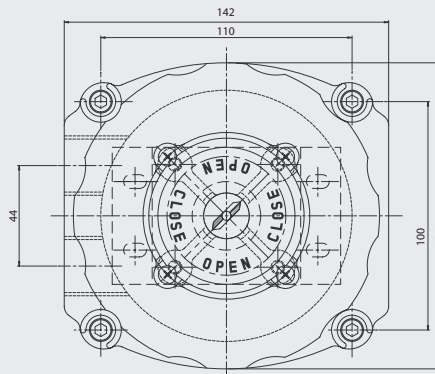
Technical Specification

Enclosure Protection	Flame proof (EExd IIB T6 & EExd IIC T6)
Ingress Protection	IP67
Coating	External powder coated, hard-anodized surface against corrosion, special coating as option
Area / Gas group classification	Zone 1, 2 / Ex d II B(C) T6
Ambient Temp	-20°C ≤ Ta ≤ 85°C (Standard), Optional higher temp on request
Cable entry	2 X PT3/4", 2 X PF3/4", 2 - NPT3/4", 2- M20 X 1.5 on request, Max 4
Terminal	8 terminals strips (6 for switches, 2 for solenoid connection)
Position monitoring indicator	0°~90° Yellow-open / Red-close (Dome)
Switches	2 X Mechanical switch, 2 X Proximity sensors, 2 X Magnetic switches 2 X DPDT switches, Position transmitter (4 - 20 mA)
Mounting bracket	VDI/VDE3845, NAMUR

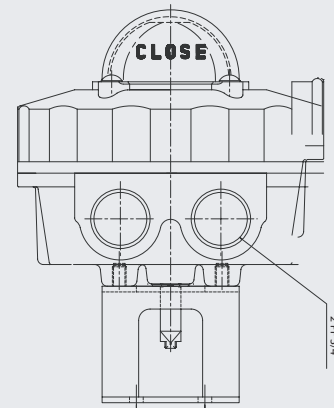
Dimension of ITS - 300 series



Front view



Top view



Side view