

**Fig no. HPV-41FS** Reduced Bore  
1/4" ~ 2" DN 8- DN 50



## Features :

**BS 6755 PART2 API 607 5th Fire safe approved**

Bar material valve body, ISO 5211 Mounting flange

Blow out proof stem, Anti-static design

360 degree rotation design, in-line maintenance

For Chemical, Industrial application

Carbon Steel, Super Alloy available upon request

## Standard Compliance

Body wall thickness : EN 12516-1/2

Socket weld : B16.11

Face to face : MD's standard

Body material : DIN

Pressure testing : EN12266

**Fire safe testing : API 607 5th, BS6755 PART 2**

**ISO 10497**

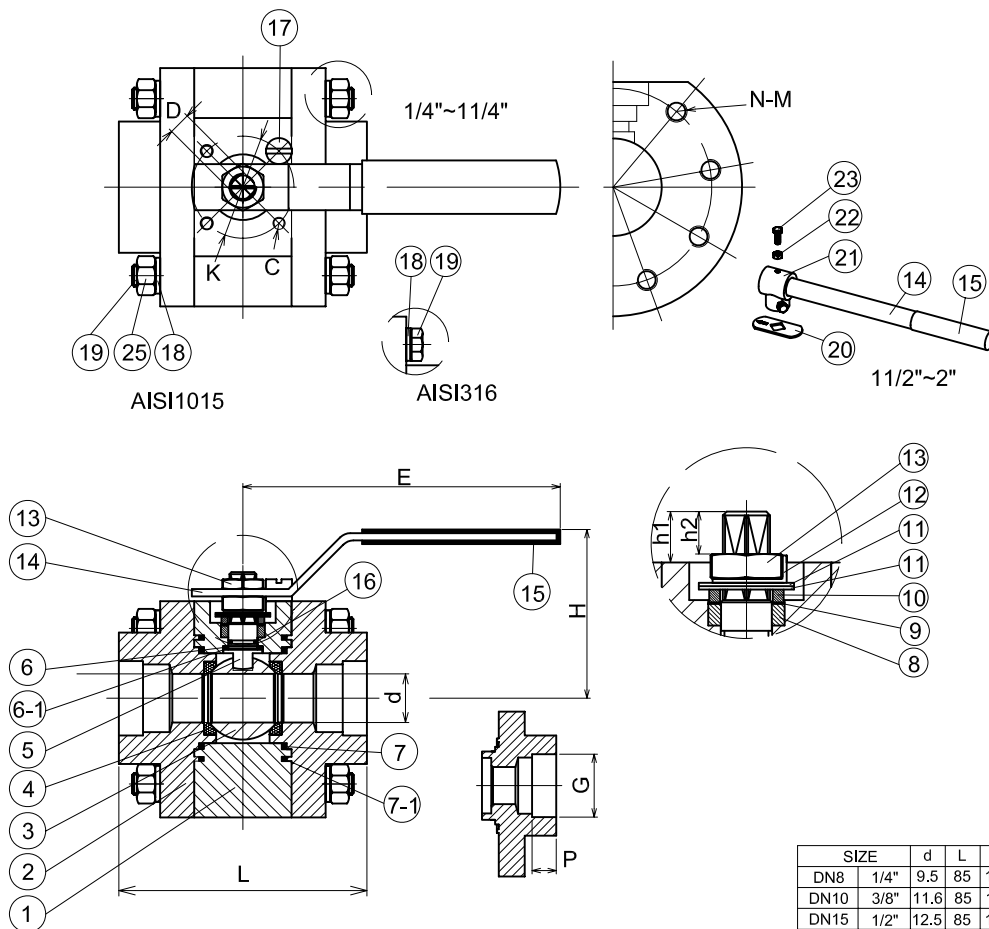
## Specification :

End Connection : Socket weld end

Working pressure : 410 bar ( CWP)

Temperature : -20°C to 80°C for Delrin seat

-20°C to 250°C for Peek seat



## MATERIALS LIST

N0	PART NAME	MATERIAL
1	BODY	1.4401 ( AISI 316) -
2	CAP	1.4401 ( AISI 316)
3	BALL	ASTM A351 Gr.CF8M
4	BALL SEATS	Delrin/ Peek
5	STEM	17-4PH
6	THRUST WASHER	Graphite
6-1	THRUST WASHER	PTFE
7	END SEALS	Graphite
7-1	END SEALS	PTFE
8	STEM PACKING	Graphite
9	THRUST WASHER	TFM1600
10	GLAND BUSH	S.S.304
11	BELLEVILLE WASAER	SUS304-CSP
12	STOP	S.S.304
13	HANDLE NUT	S.S.304
14	HANDLE	S.S.304
15	HANDLE SLEEVE	VINYL GRIP
16	O-RING	VITON
17	STOPPER	S.S.304
18	SPRING WASHER	S.S.304
19	BOLT	S.S.304
20	STOP PLATE	S.S.304
21	STEM ADAPTER	CF8
22	NUT	A2-70
23	BOLT	S.S.304
25	NUT	S45C

## DIMENSIONS

SIZE	d	L	E	H	D	K	C	h1	h2	N	M	G	P	
DN8	1/4"	9.5	85	151	61	9	36	M5	10.1	7	6	5/16-18UNC	14	10
DN10	3/8"	11.6	85	151	61	9	36	M5	10.1	7	6	5/16-18UNC	17.6	10
DN15	1/2"	12.5	85	151	61	9	36	M5	10.1	7	6	5/16-18UNC	21.7	10
DN20	3/4"	16	89	151	67	9	42	M5	14.85	10.3	8	5/16-18UNC	27.3	13
DN25	1"	20	102	183	81	9	42	M5	12	10	8	5/16-18UNC	33.9	13
DN30	1 1/4"	25	111	183	97	11	42	M5	22.3	11.5	8	5/16-18UNC	42.8	13
DN40	1 1/2"	32	119	285	113	14	50	M6	33.2	17.5	8	3/8-16UNC	48.7	13
DN50	2"	38	126	285	117	14	50	M6	28	17.5	8	1/2-13UNC	61	16