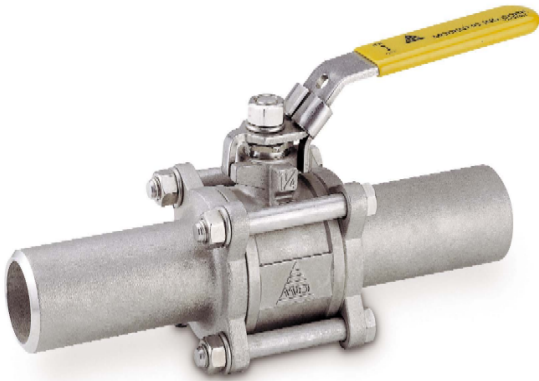


Fig no. V-105W Full Bore
1/2" - 4" (DN 15- DN100)



Features :

- Investment Casting
- Blow out proof stem, In-line Maintenance
- For Chemical, Industrial Application
- Carbon Steel or Super Alloy upon request

Standard Compliance :

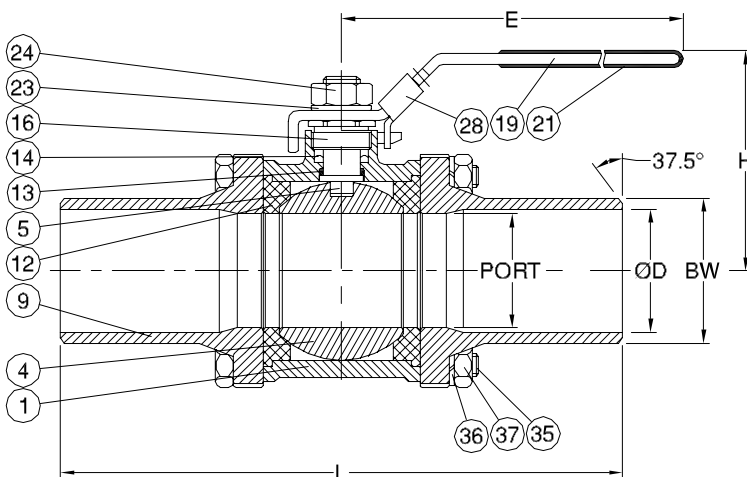
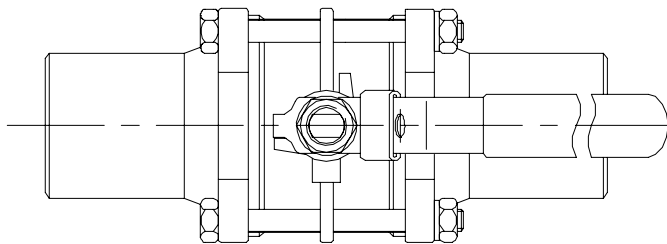
- Body wall thickness : EN 12516-1/2/3
- Butt Weld : B16.25
- Face to Face : MD's standard
- Body material : EN1503-1
- Pressure testing : EN 12266

Specification :

- End connection : Butt Weld end
- Working Pressure : 63 bar (CWP) for DN8-50
 40 bar (CWP) for DN65-100
- Temperature : -20 to 180°C

MATERIALS LIST

NO.	PART NAME	MATERIAL
1	BODY	1.4408 / EN1503-1
4	BALL	CF8M / EN1503-2
5	STEM	SS316
9	END CAP	1.4408 / EN1503-1
12	SEAT	PTFE.
13	THRUST WASHER	PTFE.
14	STEM PACKING	PTFE.
16	GLAND NUT	SS304
19	HANDLE	SS304
21	HANDLE COVER	PLASTIC
23	HANDLE WASHER	SS304
24	HANDLE NUT	SS304
28	LOCKING DEVICE	SS304 (OPTION)
35	BODY BOLT	SS304
36	BOLT WASHER	SS304
37	BOLT NUT	SS304



DIMENSIONS

SIZE	PORT	L	E	H	ØD	BW	unit:mm
DN8	1/4"	11.5	225	97.4	49.0	12.2	17.8
DN10	3/8"	12.5	225	97.4	49.0	14.0	19.2
DN15	1/2"	15.0	225	122.9	58.0	17.0	22.0
DN20	3/4"	20.0	225	122.9	61.0	22.5	27.0
DN25	1"	25.0	245	144.9	68.0	27.0	34.5
DN32	1-1/4"	32.0	255	144.9	73.5	35.0	44.0
DN40	1-1/2"	38.0	260	188.9	84.5	41.5	50.0
DN50	2"	50.0	275	188.9	93.2	53.0	61.5
DN65	2-1/2"	65.0	334	255.3	131.8	68.0	77.0
DN80	3"	80.0	354	260.8	140.0	80.0	90.0
DN100	4"	100.0	365	322.2	173.6	100.0	115.0