

Fig No:MD-82FE

1/2"~2" DN15~DN50



Features :

- Fugitive emission Control Bonnet
- Double sets of Belleville washers
- Blow-out proof stem
- ISO 5211 mounting pad
- High / Low Temperature Service applications
- Monitoring Port for the purpose of installing sensing pressure gauge

Standards compliance:

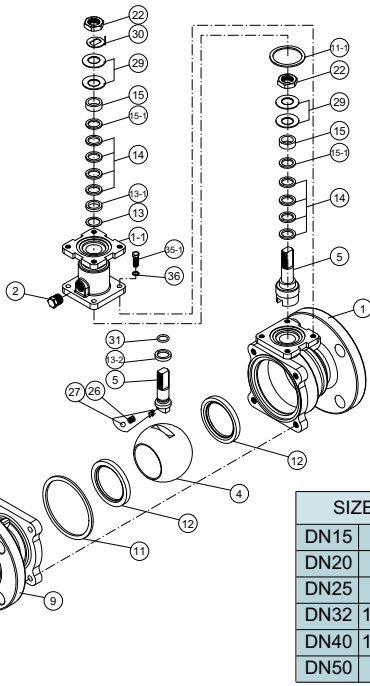
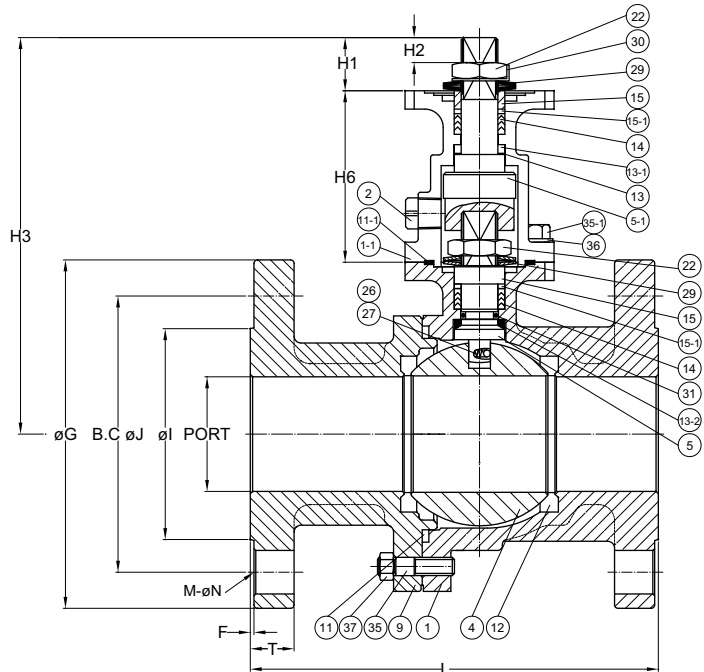
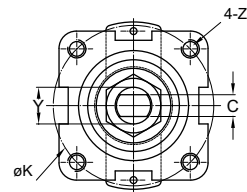
- EPA, Ta-Luft,
- API 598 / EN 12266
- ASME B 16.34
- ANSI B16.10 ANSI B16.5
- MSS-SP-55 MSS-SP-61 MSS-SP-72

Specifications:

- Temperature range: -70°F to 475°F (-57°C to 180°C)
- Face to face: ANSI B16.10 Class 150
- Flange: ANSI B16.5 Class 150 Flanged Fitting

MATERIALS LIST

NO.	PART NAME	QTY	MATERIAL
1	BODY	1	ASTM A351 GR.CF8M
1-1	F.E BODY	1	ASTM A351 GR.CF8M
2	NPT PLUG	1	SS304
4	BALL	1	ASTM A351 GR.CF8M
5	STEM	1	ASTM A479 GR.316
5-1	F.E STEM	1	ASTM A479 GR.316
9	END CAP	1	ASTM A351 GR.CF8M
11	BODY SEAL	2	TFM
11-1	F.E GASKET	1	TFM
12	SEAT	2	RTFE.
13	THRUST WASHER(1)	1	TFM
13-1	THRUST WASHER(2)	1	TFM
13-2	THRUST WASHER	1	TFM
14	STEM PACKING	2	TFM
15	GLAND	2	SS304
15-1	GLAND WASHER	2	TFM
22	STEM NUT	1	SS304
26	PLUNGER SPRING	1	SS316
27	ANTI STATIC BALL	1	SS316
29	BELLEVILLE WASHER	4	SS301
30	LOCK WASHER	1	SS304
31	O-RING	1	VITON
35	BODY BOLT	4	SS304
35-1	F.E BOLT	4	SS304
36	F.E SPRING WASHER	4	SS304
37	BOLT NUT	4	SS304



DIMENSIONS

unit:mm

SIZE	PORT	L	H1	H2	H3	H6	C	Y	øG	øJ	øI	T	F	M-øN	øK	Z	
DN15	1/2"	15.0	108.0	14.2	7.6	104.9	50.8	6.4	12.0	89.0	60.5	35.0	11.2	1.6	4-ø16.0	42.0	10-24UNC
DN20	3/4"	20.0	117.0	14.2	7.6	107.5	50.8	6.4	12.0	98.0	70.0	43.0	12.7	1.6	4-ø16.0	42.0	10-24UNC
DN25	1"	25.0	127.0	18.7	10.0	145.5	74.8	8.0	14.0	108.0	79.5	51.0	14.3	1.6	4-ø16.0	50.0	1/4-20UNC
DN32	1-1/4"	32.0	140.0	18.7	10.0	149.5	74.8	8.0	14.0	117.5	88.9	63.5	15.9	1.6	4-ø16.0	50.0	1/4-20UNC
DN40	1-1/2"	38.0	165.0	23.7	12.0	164.5	74.8	9.5	16.0	127.0	98.5	73.0	17.5	1.6	4-ø16.0	70.0	5/16-18UNC
DN50	2"	50.0	178.0	23.7	12.0	173.5	74.8	9.5	16.0	152.0	120.5	92.0	19.1	1.6	4-ø19.0	70.0	5/16-18UNC