

Fig No. HPV-84 Reduced Bore
1/4" ~ 2" DN 8- 50



Feature :

- Investment Casting Component, ISO 5211 Direct Mounting
- Blow-out-proof design & Anti-static design
- All seats are pre-loaded
- For Chemical and industrial application
- Carbon Steel or Super Alloy available upon request

Standard Compliance :

- Body wall thickness : EN 12516-1/3
- Threaded end : BS 21 (BSP)
- BSPT
- ISO 228-1
- ISO 7-1Rp
- DIN 2999

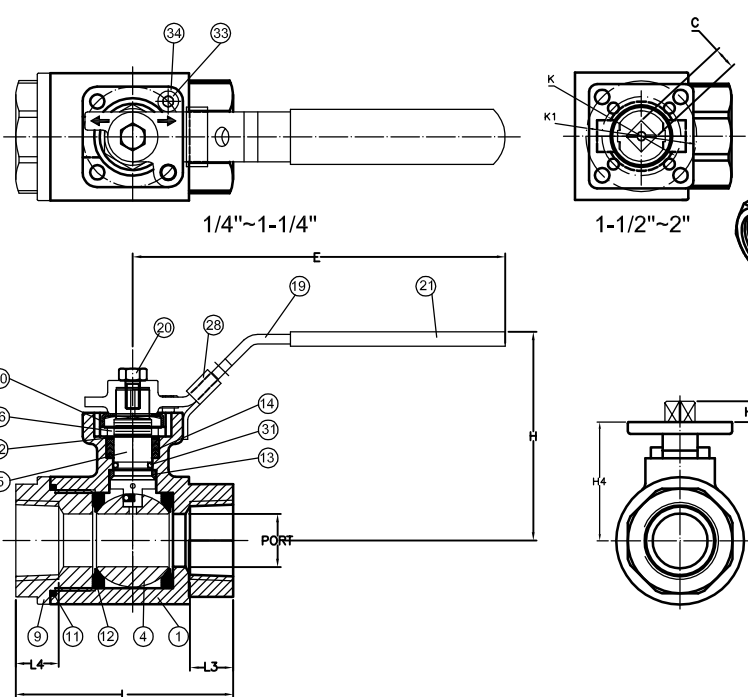
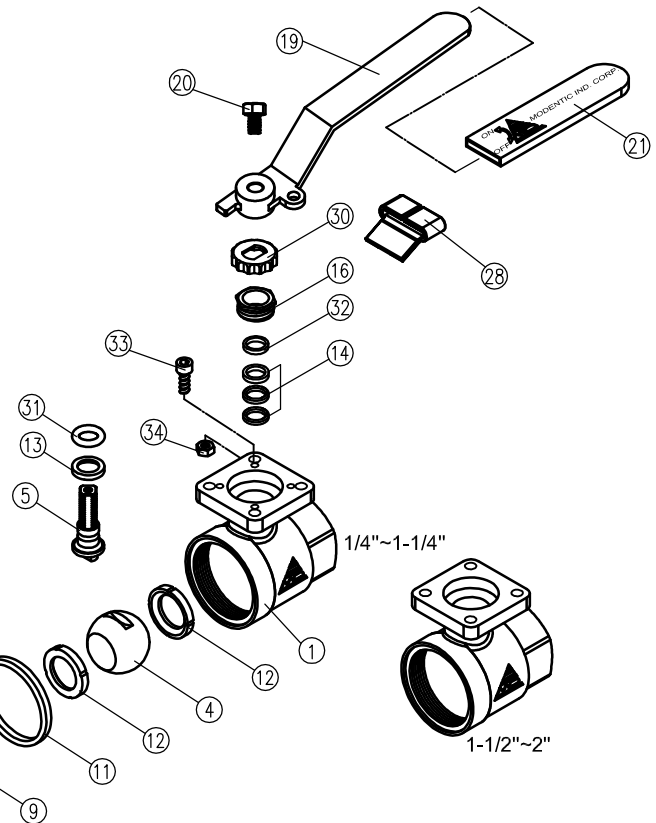
- Face to Face length : MFG's standard
- Body Material : EN 1503-1
- Pressure testing : EN 12266

Specification :

- End Connection : Threaded end
- Working pressure : 210 Bar (CWP)
- Temperature : -20 to 80°C for Delrin seat
- 20 to 250°C for Peek seat

MATERIALS LIST

NO.	PART NAME	MATERIAL
1	BODY	1.4408/EN1503-1
4	BALL	CF8M/EN1503-2
5	STEM	SS316
9	END CAP	1.4408/EN1503-1
11	BODY SEAL	PTFE.
12	SEAT	DELFRIN
13	THRUST WASHER	PTFE.
14	STEM PACKING	PTFE.
16	GLAND NUT	SS304
19	HANDLE	SS304
20	SET SCREW	SS304
21	HNADLE COVER	PLASTIC
*28	LOCKING DEVICE(*Option)	SS304
30	TAB WASHER	SS304
31	O-RING	VITON
32	PACKING FOLLOWER	50% S.S. + 50% PTFE.
33	STOP PIN	SS304
34	STOP NUT	SS304



DIMENSIONS unit:mm

SIZE	SIZE	PORT	L	L3	L4	E	H	H1	H4	C	W	K	K1
DN8	1/4"	9.7	75.0	15.2	15.2	9.0	72.0	8.0	41.0	126.0	25.9	F03	F04
DN10	3/8"	9.7	75.0	15.2	15.2	9.0	72.0	8.0	41.0	126.0	25.9	F03	F04
DN15	1/2"	12.7	75.0	15.2	15.2	9.0	72.0	8.0	41.0	126.0	32.6	F03	F04
DN20	3/4"	17.5	81.0	17.0	17.0	9.0	75.0	8.0	43.8	126.0	38.4	F03	F04
DN25	1"	22.1	91.0	18.0	18.0	11.0	87.0	10.0	53.5	156.0	47.2	F04	F05
DN32	1-1/4"	29.0	110.0	20.0	20.0	11.0	93.0	10.0	59.0	156.0	58.9	F04	F05
DN40	1-1/2"	34.7	121.0	22.0	22.0	14.0	114.0	13.0	75.2	181.0	66.2	F05	F07
DN50	2"	34.7	145.0	27.5	27.5	14.0	114.0	13.0	75.2	181.0	82.0	F05	F07