

**Fig no. V-255TC Tube Bore**  
**1/2" - 2" DN15- DN50**



2 purge port on body



1 purge port on body + 2 purge holes on ball



Extension stem

## Features:

TFM 1600 seal kits confirm to FDA/ USP Approved  
Investment casting, ISO 5211 Mounting flange  
Blow-out-proof stem  
two position locking device  
In-line Maintenance  
For semiconductor & pharmacy industries

## Standard Compliance :

Body wall thickness : EN 12516-1/2, B16.34/ BPE  
Clamp end : 3A, ASME/BPE 2002 DT-10  
Face to face : MD's standard  
Body material : 1.4409 / EN1503-1/ CF3M  
Pressure testing : EN 12266/ API 598  
Port polished per SV1

## Specification :

End Connection : T-Clamp  
Working pressure : 100 bar for DN15-25,  
63bar for DN32 & above  
Temperature : -57 ~ 180°C  
Inter finish polished to SV1

## Options:

1. Cavity Filler seat
2. Inter finish polished to electropolished SV4
3. Anti-static grounding service
4. Purge port
5. Extension stem

## •) Table Sf-6 RA Readings for Valves

Mechanically Polished [Note (1)]		
Surface Designation ASME BPE	Ra, Max.	
	μ-in.	μm
SFV 1	20	0.51
SFV 2	25	0.64
SFV 3	30	0.76

Mechanically Polished and Electropolished		
Surface Designation ASME BPE	Ra, Max.	
	μ-in.	μm
SFV 4	15	0.38
SFV 5	20	0.51
SFV 6	25	0.64

Adopted from ASME / BPE - 2005

## GENERAL NOTES:

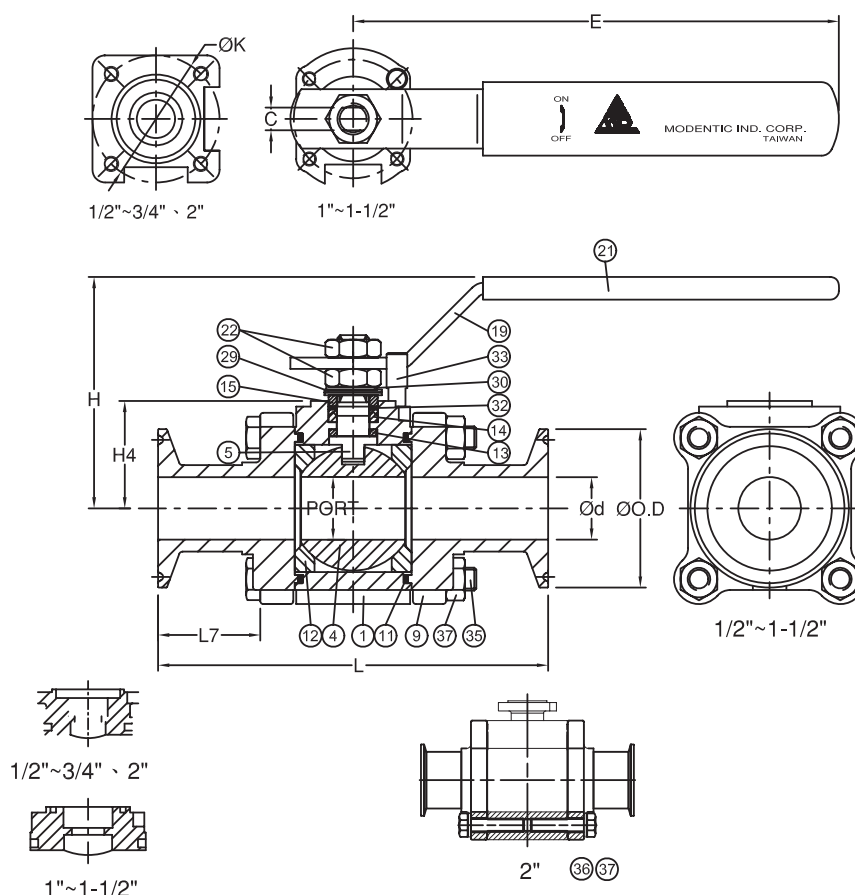
- (a) All Ra reading are taken across the lay, wherever possible.
- (b) No single Ra reading shall exceed the Ra max. value in this table.
- (c) Other Ra readings are available if agreed upon between owner / user and manufacturer, not to exceed values in this table.

## NOTE:

(1) Or any other finishing method that meets the Ra max.

**Fig no. V-255TC Tube Bore**

**1/2" - 2" DN15- DN50**



## DIMENSIONS

SIZE		PORT	L	L7	E	H	H4	C	ØK	Ød	ØO.D
DN15	1/2"	9.5	90.9	22.7	132.8	69.3	30.0	6.5	36.0	9.4	25.4
DN20	3/4"	15.9	108.0	26.8	132.8	73.8	34.0	6.5	36.0	15.8	25.4
DN25	1"	22.2	130.7	32.5	171.8	81.9	38.0	8.0	42.0	22.1	50.4
DN40	1-1/2"	34.9	150.1	32.4	204.2	97.5	48.8	9.7	50.0	34.8	50.4
DN50	2"	47.6	171.4	35.2	204.2	115.0	71.0	9.7	50.0	47.5	63.9

## MATERIALS LIST

NO.	PART NAME	MATERIAL
1	BODY	1.4409/EN1503-1
4	BALL	1.4409/EN1503-1
5	STEM	SS316L
9	END CAP	1.4409/EN1503-1
11	BODY SEAL	TFM1600
12	SEAT	TFM1600
13	THRUST WASHER	TFM1600
14	STEM PACKING	TFM1600
15	GLAND BUSH	SS304
19	HANDLE	SS304
21	HANDLE COVER	PLASTIC
22	STEM HALF NUT	SS304
29	BELLEVILLE WASHER	SS301
30	TAB WASHER	SS304
32	PACKING FOLLOWER	TFM1600
33	LEVER STOP	SS304
35	BODY BOLT	SS304
36	BOLT WASHER	SS304
37	BOLT NUT	SS304